

MapViewer™

New Revolutions in Map Making



Version

4

Golden Software, Inc.

Why Create a Thematic Map?

A thematic map visually represents the geographic distribution of data. MapViewer will help you to:

- understand demographics
- define sales or insurance territories
- outline marketing strategies
- track population trends
- show ecological distribution
- display any geographically distributed data

Manage and improve your business by producing hatch, pie, density, symbol, bar, prism, pin, line graph or flow maps for presentations or publications. Use the data included with MapViewer, import data from another source or enter your own data into MapViewer's full-featured worksheet. Produce the most visually appealing and informative maps possible. MapViewer is designed to meet your specific needs.



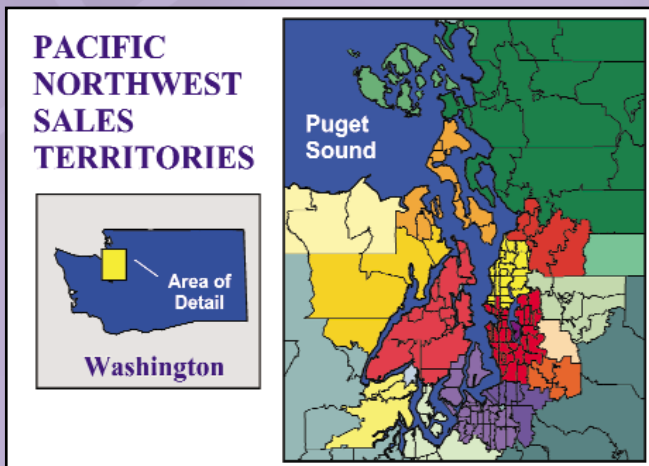
Convert the projection of your map to one of over 25 map projections. The map above shows a hatch map combined with a pin map using Lambert Azimuthal Equal Area projection.

Use MapViewer's Wide Selection of Boundaries or Use Your Own!

MapViewer includes a comprehensive selection of boundary files to get you started. Use the boundary files included with MapViewer, import boundary files from another source or create your own. It's easy to add boundaries, combine boundaries or delete unwanted boundaries from your maps with MapViewer's outstanding editing capabilities.

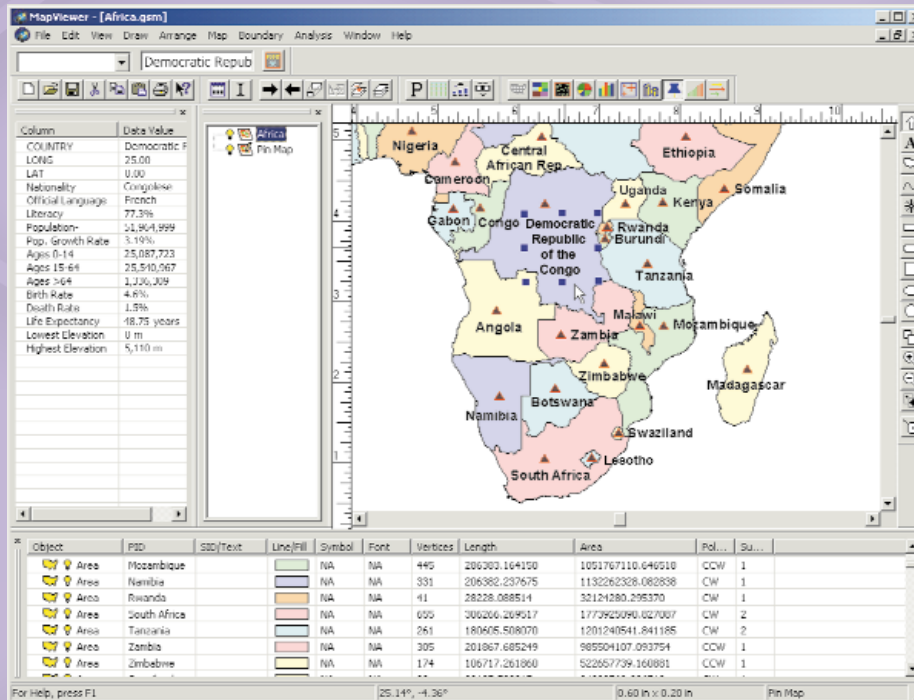
Boundary files included:

- US city point locations
- US states
- US counties
- 3-digit ZIP codes
- 5-digit ZIP codes
- World countries
- and more!

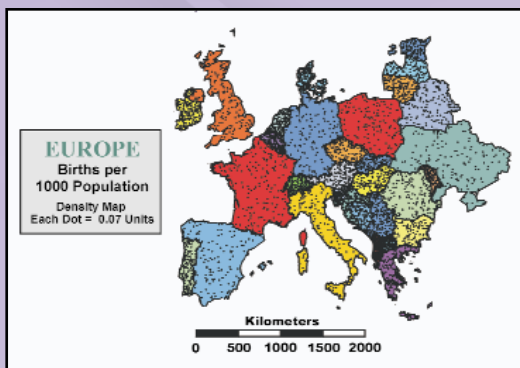


Define sales territories or marketing areas using the 5-digit ZIP code boundaries.

MapViewer™ 4

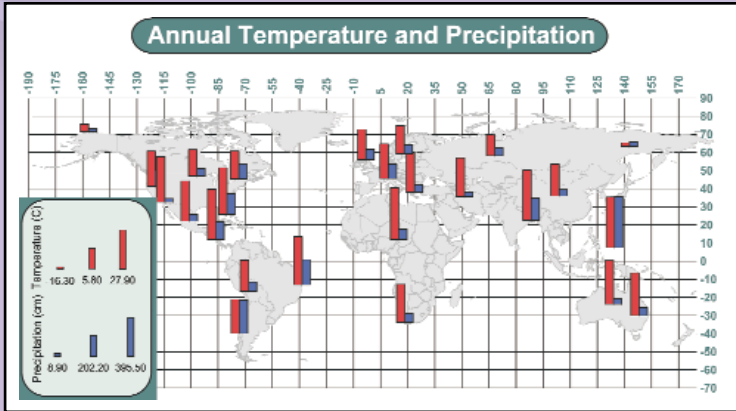


Display information associated with areas, curves or points. Three organizational managers make selecting and editing objects and layers easy! The Layer Manager makes all layers visible and easily accessible. The Object Property Manager allows you to easily view and edit object properties. The Object Data Manager allows you to see and edit all data for an object.

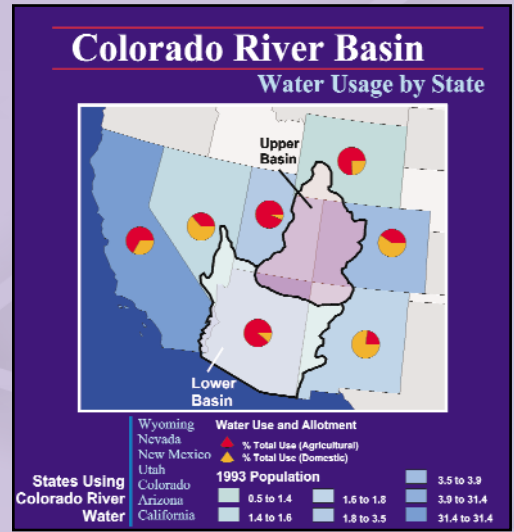


Use density maps to effectively show data distribution.

MapViewer 4 is an affordable analytical tool that allows you to produce publication-quality maps easily. Small businesses, large corporations, independent consultants, scientists, GIS analysts, statisticians and numerous government agencies are discovering important trends in their data with MapViewer. Display your data distribution easily and precisely with more easy-to-use features than ever. Your data is unique and you need the best mapping software for the job!



Compare data using MapViewer's bar map. Add labeled graticule lines to any map.



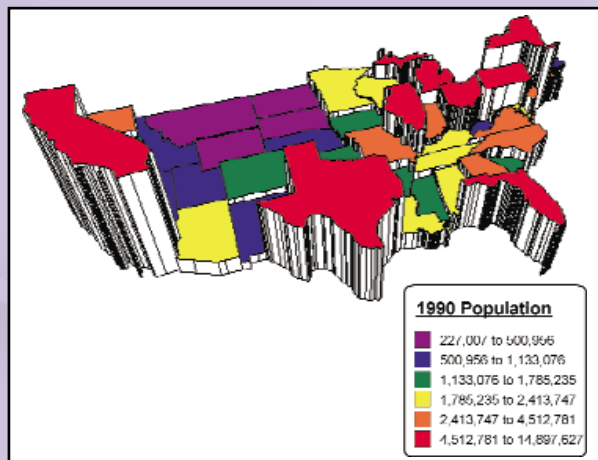
Display multiple variables by creating layers and using different map types. This map uses a hatch map and a pie map.

Free Technical Support!

When you have questions, consult the easy to read User's Guide, check the dynamic online help or browse the FAQs on the Golden Software web site. If you ever need additional help, Golden Software provides FREE technical support. This service is free to all registered users and is available by phone, fax or email.



Create a pin map, then customize the labels! Change the location, rotation, font and symbol properties for each pin.



Color prism maps make highly effective data displays. The prism height is relative to the associated data values. Define color classes according to a color variable, use a color gradation, or use area fill and specify the colors.

To order your copy of MapViewer, please contact Golden Software at:

800-972-1021

or

303-279-1021

Place your order or download a free demo version online at:

www.goldensoftware.com

MapViewer™ 4 Features

User Friendly

- The Layer Manager makes all layers visible and easily accessible.
- The Object Property Manager allows you to easily view and edit object properties.
- The Object Data Manager allows you to see and edit all data for an object.
- Easily add or remove variables in pie, bar and post map dialog boxes.
- Use one of the several toolbars.
- The Change File button in the map dialog boxes allows you to keep your map settings but use different data.
- The combo box allows you to search via Primary ID list.
- The edit control on a toolbar allows you to change or assign a Primary ID to a selected object.

General Features

- MapViewer 4 is a 32-bit double precision application.
- Define the number of Undo/Redo levels.
- Control the default setting parameters.

Map Types

- Prism Map
- Line Graph Map
- Flow Map
- Hatch Map
- Density Map
- Pie Map
- Bar Map
- Symbol Map
- Pin Map
- Base Map

Mapping Features

- Move and rotate pin map labels.
- Assign classes to the pins on a pin map.
- Map limits will show only a portion of your map.
- Add scale bars to maps.
- Specify feet, meter or other distance units for scale bars and distance measurements.
- Map scale bars can optionally have the first cycle divided into components.
- The map automatically updates when the data file is changed.
- Use layers to create maps displaying several variables.
- Associate worksheet data to areas, curves or points on a map.
- Create maps using any coordinate system.
- Add graticule lines and label the graticule lines.
- Create Primary IDs with text or numbers.
- Digitize points off a map and save the point coordinates in a data file.
- Move or copy map features between map layers.
- View or modify data for a selected area, curve or point.
- Enhance maps by drawing objects at any position.
- Use the reshape tool to edit areas and curves.
- Move the centroid coordinates of a curve or area.
- Centroid coordinates can be reported in a file.
- Convert an area to a curve, or a curve to an area.
- Break a curve into segments or connect different curves.
- General map information, such as data files used and projection parameters, can be reported in a file.

Spatial Analysis

- Use the datum transformation tool to specify one of over 200 datums or choose to create a custom datum.
- Convert the projection of your map to one of over 25 map projections.
- Use buffer analysis to draw a buffer around points, curves and areas and then query.
- The Measure Distance tool calculates the distance between points.
- Add a list of locations and then calculate the sum of the distances between the locations.

Boundary/Data Features

- Use the improved query dialog boxes.
- Utilize queries on all map types on all layers.
- Use the Browse Database Records command.
- Select one or more boundary objects based on their Primary IDs.
- Thin boundaries to reduce file size.
- Emphasize a group by increasing or decreasing its scale.
- Boundary files include 5-digit ZIP code boundary files, 3-digit ZIP code boundary files, US state and county boundary files, world country boundary files and miscellaneous US boundary files including MSA and major US Highways.

Drawing Tools

- Drawing tools include text, area, curve, point, rectangle, rounded rectangle, square, ellipse and circle objects.
- Some objects can be rotated, moved and scaled.
- Text properties include bold, italic, underline, strikethrough, alignments, foreground and background colors, sizes, fonts and math text commands.
- Change the properties of multiple selected objects simultaneously.
- Create new vector or bitmap fill patterns.

Worksheet Features

- The worksheet allows you to display, enter, edit, sort, print and save your data.
- Import formats include: XLS, SLK, WK4, WK3, WK1, WKS, WRK, WR1, CSV, TXT, DAT, BNA, BLN, DBF, MDB, DB.
- Save the worksheet in the following formats: XLS, SLK, CSV, TXT, DAT, BNA, BLN.
- Use multiple sheets from a single Excel file.
- Calculate data statistics.
- Transform data using custom equations.
- Format cell height, width, background color and text display properties.

Import and Export Options

- Import formats include: GSB, DXF, DLG, LGO, LGS, GSI, GSM, BNA, BLN, PLT, EMF, WMF, CLP, MIF, SHP, USGS SDTS Topological Vector Profiles (DDF), E00, TIF, BMP, TGA, PCX, WPG, DCX, EPS, JPG, PCT, PNG, GIF.
- Export formats include: EMF, DXF, MIF, SHP, BNA, BLN, GSB, WMF, CLP, CGM, GSI, TIF, BMP, TGA, PCX, WPG, PNG, JPG, PCT, DCX, GIF.

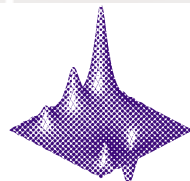
Order MapViewer™ Today!

MapViewer is available directly from Golden Software. You can order by phone, fax or use our secure online order form at:
www.goldensoftware.com.

Please contact us if you have any questions.

System Requirements

- Windows 95/98/ME/2000, Windows NT 4.0 SP3 or higher.
- 12 MB RAM minimum, 32 MB recommended.
- 22 MB of free hard disk space.
- 800 X 600 minimum monitor resolution.



G o l d e n
S o f t w a r e , I n c .

www.goldensoftware.com

809 14th Street, Golden, Colorado 80401-1866 U.S.A.
800-972-1021 • 303-279-1021 • FAX 303-279-0909